



The Spring 2014 issue of Inform includes a report on recent housing projects, from high-density city dwellings to new rural vernacular houses and assisted living apartments for elderly people.

## RESOURCE

### 02 UPDATE

New projects including Fassio Viaud Architectes' Corian-clad positive-energy office in Paris, Germany's first Passivhaus-certified supermarket by Spengler Wiescholek, and North West Bicester eco-town, masterplanned by Farrells; plus results of the 2014 BREEAM Awards and Civic Trust Awards; and new developments in CAD and IT.

## RESEARCH

### 06 MAKE

Cutting edge: a look inside Stora Enso's state-of-the-art cross-laminated timber manufacturing plant in Austria.

### 10 MAKE

Cross-laminated timber provides structure, insulation and thermal mass at an architectural archive building in Somerset by Hugh Strange Architects.

## REPORT

**12** A Kent housing scheme by Proctor & Matthews is inspired by rural vernacular architecture.

**16** Towering ambition: dRMM's Art-House in King's Cross, London.

**22** Pitman Tozer's affordable rented housing project in east London uses brick to striking effect.

**26** An assisted living scheme in Leicester by PRP Architects is planned around a courtyard garden.

## PRODUCT

**28** Structure & Fabric

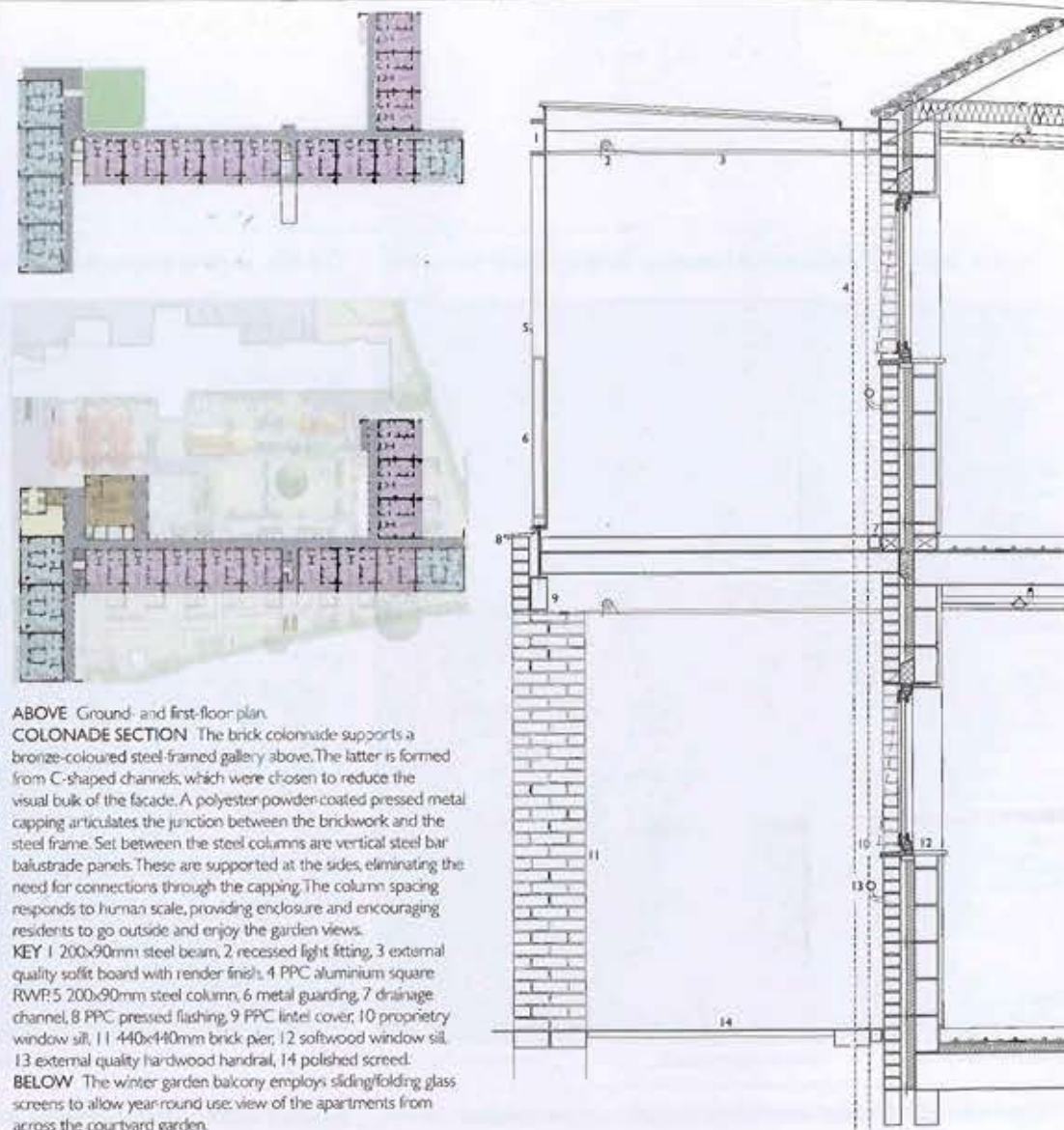
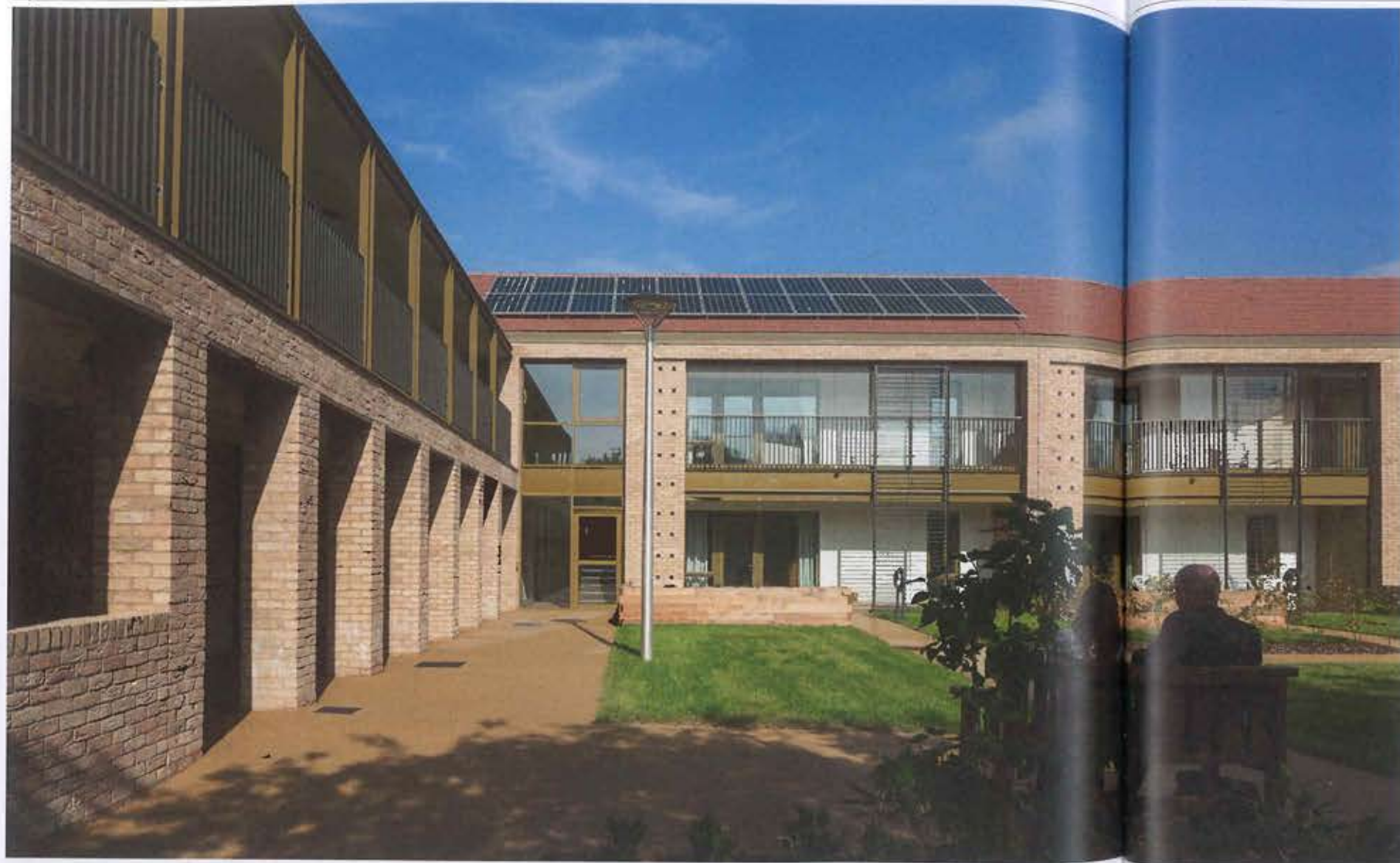
**32** Services

**34** Components

**38** Interiors & Lighting

**40** Company News

**Cover/contents** Mint Street in Bethnal Green, east London, by Pitman Tozer Architects (ph: Nick Kane)/Pilgrim Gardens Assisted Living, Evington, by PRP Architects (ph: Tim Crocker).



ABOVE Ground- and first-floor plan.  
**COLONADE SECTION** The brick colonnade supports a bronze-coloured steel-framed gallery above. The latter is formed from C-shaped channels, which were chosen to reduce the visual bulk of the facade. A polyester powder-coated pressed metal capping articulates the junction between the brickwork and the steel frame. Set between the steel columns are vertical steel bar balustrade panels. These are supported at the sides, eliminating the need for connections through the capping. The column spacing responds to human scale, providing enclosure and encouraging residents to go outside and enjoy the garden views.  
**KEY** 1 200x90mm steel beam, 2 recessed light fitting, 3 external quality soffit board with render finish, 4 PPC aluminium square RWP, 5 200x90mm steel column, 6 metal guarding, 7 drainage channel, 8 PPC pressed flashing, 9 PPC lintel cover, 10 proprietary window sill, 11 440x440mm brick pier, 12 softwood window sill, 13 external quality hardwood handrail, 14 polished screed.  
**BELOW** The winter garden balcony employs sliding/folding glass screens to allow year-round use; view of the apartments from across the courtyard garden.

# Taking care

*An assisted living scheme in Leicester by PRP Architects is planned around a courtyard garden.*

The Pilgrims Friend Society has been providing housing and care to elderly Christians at Pilgrim Gardens in Evington, Leicester, since the 1950s. PRP Architects' redevelopment projects has remodelled the existing care home and replaced 14 outdated bungalows with 31 assisted living apartments.

Sited adjacent to the care home, the new 2,380 square metre building is planned around a central courtyard garden. A covered link connects the two buildings, while further securing and defining the garden. Inside the entrance to the apartment building is a double-height

atrium affording views of the communal lounge, terrace and courtyard beyond. Set facing into the garden, the lounge is a single-storey structure with high ceilings and a green roof.

The dual-aspect apartments are accessed via a brick colonnade and steel gallery at ground- and first-floor level respectively. The layout is designed to be logical and legible, wrapping around the courtyard and providing constant views outside to aid orientation. The apartments avoid north-facing habitable rooms and all have balconies with sliding/folding winter gardens to enable year-round use.

**Credits** Architect: PRP Architects; project team: Clare Cameron, Mary Hutchison, Donna Vick, Stephen McGrath, Tom Delhanty; structural engineer: Alan McEwan Associate; m&e: BES Consulting Engineer; employer's agent, qs: Henry Riley; contractor: Keepmoat; client: Pilgrims Friend's Society; brick: TBS Shelford Cream Multi; apartment windows: UPVC Building Product Solutions; winter garden glazing: Solarlux; roof tiles: Sandtoft; insulation: Rockwool; entrance/communal flooring: Tarket ID Premier Wood; lounge carpet: Ege Highline loop; lighting: Thorn; sanitaryware: Armitage Shanks; timber planters: Woodscape; hard landscaping: Addastone resin bound pathways, Marshalls paving, granite setts.

